



NATL SEMICOND (LINEAR)

T-73-53

# LM710 Voltage Comparator

## General Description

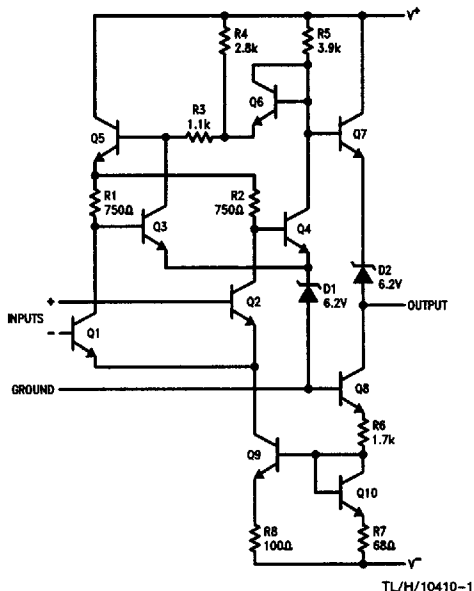
The LM710 series are high-speed voltage comparators intended for use as an accurate, low-level digital level sensor or as a replacement for operational amplifiers in comparator applications where speed is of prime importance. The circuit has a differential input and a single-ended output, with saturated output levels compatible with practically all types of integrated logic.

The device is built on a single silicon chip which insures low offset and thermal drift. The use of a minimum number of stages along with minority-carrier lifetime control (gold doping) makes the circuit much faster than operational amplifiers in saturating comparator applications. In fact, the low

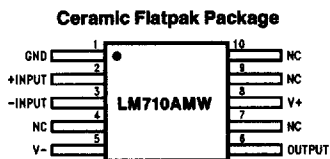
stray and wiring capacitances that can be realized with monolithic construction make the device difficult to duplicate with discrete components operating at equivalent power levels.

The LM710 series are useful as pulse height discriminators, voltage comparators in high-speed A/D converters or go, no-go detectors in automatic test equipment. They also have applications in digital systems as an adjustable-threshold line receiver or an interface between logic types. In addition, the low cost of the units suggests them for applications replacing relatively simple discrete component circuitry.

## Schematic and Connection Diagrams

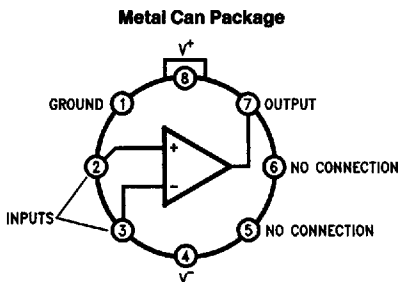


TL/H/10410-1



TL/H/10410-9

Order Number LM710AMW/883\*  
See NS Package Number W10A



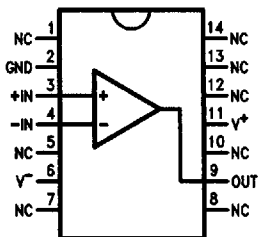
TL/H/10410-2

Top View

Note: Pin 4 is connected to case.

Order Number LM710AMH/883\*, LM710H,  
LM710H/883 or LM710CH  
See NS Package Number H08C

Dual-In-Line Package



TL/H/10410-3

Top View

Order Number  
LM710AMJ/883\* or LM710CN  
See NS Package Number N14A or J14A

\*Also available per JM38510/10301

## NATL SEMICOND (LINEAR)

**Absolute Maximum Ratings**

If Military/Aerospace specified devices are required, please contact the National Semiconductor Sales Office/Distributors for availability and specifications.

Positive Supply Voltage	+14V
Negative Supply Voltage	-7V
Peak Output Current	10 mA
Output Short Circuit Duration	10 seconds
Differential Input Voltage	±5V
Input Voltage	±7V

Power Dissipation	
TO-99 (Note 1)	700 mW
Plastic Dual-In-Line Package (Note 2)	950 mW
Operating Temperature Range	
LM710	-55°C to +125°C
LM710C	0°C to +70°C
Storage Temperature Range	-65°C to +150°C
Lead Temperature (Soldering, 10 sec.)	260°C

**Electrical Characteristics** (Note 3)

Parameter	Conditions	LM710			LM710C			Units
		Min	Typ	Max	Min	Typ	Max	
Input Offset Voltage	$R_S \leq 200\Omega$ , $V_{CM} = 0V$ , $T_A = 25^\circ C$		0.6	2.0		1.6	5.0	mV
Input Offset Current	$V_{OUT} = 1.4V$ , $T_A = 25^\circ C$		0.75	9.0		1.8	5.0	$\mu A$
Input Bias Current	$T_A = 25^\circ C$		13	20		16	25	$\mu A$
Voltage Gain	$T_A = 25^\circ C$	1250	1700		1000	1500		
Output Resistance	$T_A = 25^\circ C$		200			200		$\Omega$
Output Sink Current	$V_{OUT} = 0$ , $T_A = 25^\circ C$ $\Delta V_{IN} \geq 5 mV$ $\Delta V_{IN} \geq 10 mV$	2.0	2.5		1.6	2.5		mA mA
Response Time	$T_A = 25^\circ C$ (Note 4)		40			40		ns
Input Offset Voltage	$R_S \leq 200\Omega$ , $V_{CM} = 0V$			3.0			6.5	mV
Average Temperature Coefficient of Input Offset Voltage	$T_{MIN} \leq T_A \leq T_{MAX}$ $R_S \leq 50\Omega$		3.0	10		5.0	20	$\mu V/^\circ C$
Input Offset Current	$T_A = T_{A MAX}$ $T_A = T_{A MIN}$		0.25 1.8	3.0 7.0			7.5 7.5	$\mu A$ $\mu A$
Average Temperature Coefficient of Input Offset Current	$25^\circ C \leq T_A \leq T_{MAX}$ $T_{MIN} \leq T_A \leq 25^\circ C$		5.0 15	25 75		15 24	50 100	$nA/^\circ C$ $nA/^\circ C$
Input Bias Current	$T_A = T_{MIN}$		27	45		25	40	$\mu A$
Input Voltage Range	$V^- = -7V$	±5.0			±5.0			V
Common-Mode Rejection Ratio	$R_S \leq 200\Omega$	80	100		70	98		dB
Differential Input Voltage Range		±5.0			±5.0			V
Voltage Gain		1000			800			V/V
Positive Output Level	$-5 mA \leq I_{OUT} \leq 0$ $V_{IN} \geq 5 mV$ $V_{IN} \geq 10 mV$	2.5	3.2	4.0	2.5	3.2	4.0	V V
Negative Output Level	$V_{IN} \geq 5 mV$ $V_{IN} \geq 10 mV$	-1.0	-0.5	0	-1.0	-0.5	0	V V
Output Sink Current	$V_{IN} \geq 5 mV$ , $V_{OUT} = 0$ $T_A = 125^\circ C$ $T_A = -55^\circ C$	0.5 1.0	1.7 2.3					mA mA
	$V_{IN} \geq 10 mV$ , $V_{OUT} = 0$ $0^\circ C \leq T_A \leq +70^\circ C$				0.5			mA

## Electrical Characteristics (Note 3) (Continued)

Parameter	Conditions	LM710			LM710C			Units
		Min	Typ	Max	Min	Typ	Max	
Positive Supply Current	$V_{IN} \geq 5 \text{ mV}$		5.2	9.0				mA
	$V_{IN} \geq 10 \text{ mV}$					5.2	9.0	mA
Negative Supply Current	$V_{IN} \geq 5 \text{ mV}$		4.6	7.0				mA
	$V_{IN} \geq 10 \text{ mV}$					4.6	7.0	mA
Power Consumption	$I_{OUT} = 0$							
	$V_{IN} \geq 5 \text{ mV}$		90	150				mW
	$V_{IN} \geq 10 \text{ mV}$						150	mW

**Note 1:** Rating applies for ambient temperatures of 25°C; derate linearly at 5.6 mW/°C for ambient temperatures above 25°C.

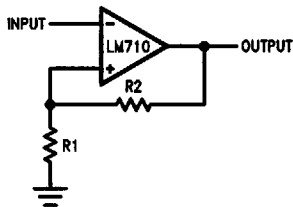
**Note 2:** Derate linearly at 9.5 mW/°C for ambient temperatures above 25°C.

**Note 3:** These specifications apply for  $V^+ = 12\text{V}$ ,  $V^- = -6\text{V}$ ,  $-55^\circ\text{C} \leq T_A \leq +125^\circ\text{C}$  for LM710 and  $0^\circ\text{C} \leq T_A \leq +70^\circ\text{C}$  for LM710C unless otherwise specified: The input offset voltage and input offset current (see definitions) are specified for a logic threshold voltage of 1.8V at  $-55^\circ\text{C}$ , 1.4V at  $25^\circ\text{C}$ , and 1V at  $125^\circ\text{C}$  for LM710 and 1.5V at  $0^\circ\text{C}$ , 1.4V at  $25^\circ\text{C}$ , and 1.2V at  $70^\circ\text{C}$  for LM710C.

**Note 4:** The response time specified (see definitions) is for a 100 mV input step with 5 mV overdrive (LM710) or a 10 mV overdrive (LM710C).

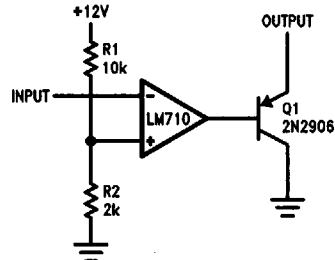
## Typical Applications

## Schmitt Trigger



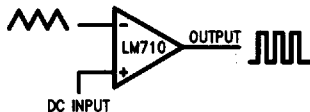
TL/H/10410-4

## Line Receive with Increased Output Sink Current



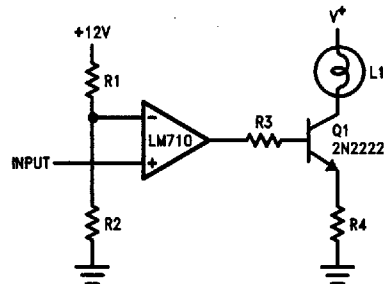
TL/H/10410-5

## Pulse Width Modulator



TL/H/10410-6

## Level Detector with Lamp Driver



TL/H/10410-7

Typical Performance Characteristics

