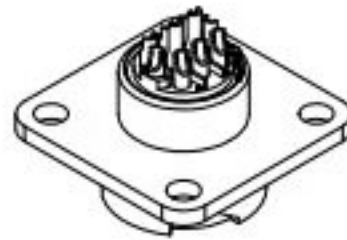
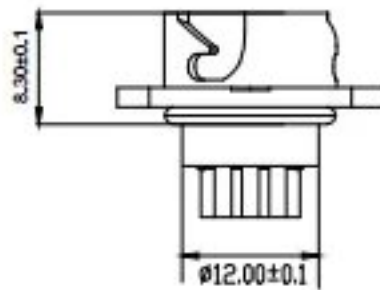
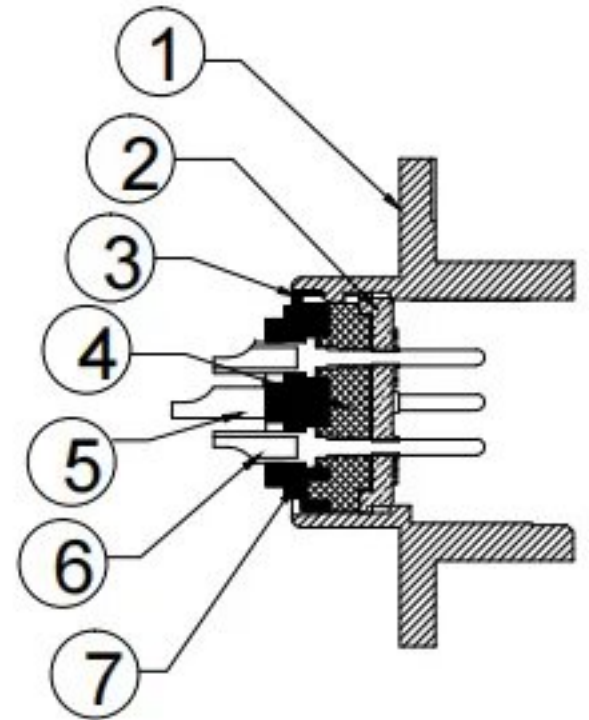
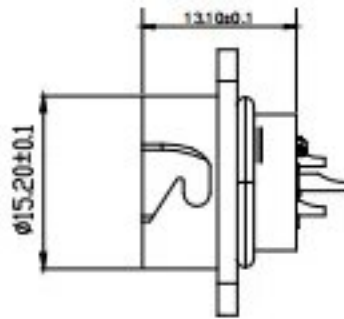
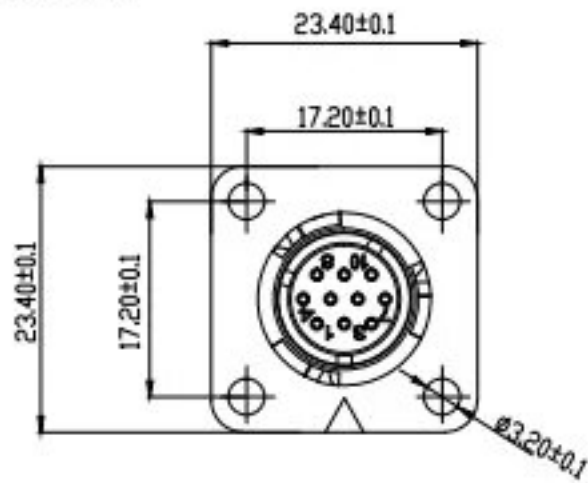


CM10-R10P



Technical Parameters

Rated Current: 3A Max. / Contact

Rated Voltage: 200VAC(r.ms.) Max

Dielectric Withstand Voltage: 1500VAC(r.ms.) / 1 minute

Insulation Resistance: 1000M Q Min. at 500VDC

Operating Temperature: -20C to +105C (including temperature rise)

Serial numbe	Accessory name	quantity	materialtexture of material
1	Square seat	1	Zinc alloy nickel plated
2	Digital gasket	1	NBR60
3	Grounding lug	1	Beryllium Copper, Gold Plated 3U
4	Split type plastic rubber core	1	PA66
5	Long pin	2	Phosphor copper C5210EH, gold plated 3U
6	Short pin	8	Phosphor copper C5210EH, gold plated 3U
7	Upper digital cover plate	1	PA66